



# Strategies Towards Energy Performance – Urban Planning.Riga

Inete Ielite, Riga SEAP Management Board  
Member,  
Glasgow, May 7th, 2015

[www.stepupsmartcities.eu](http://www.stepupsmartcities.eu)



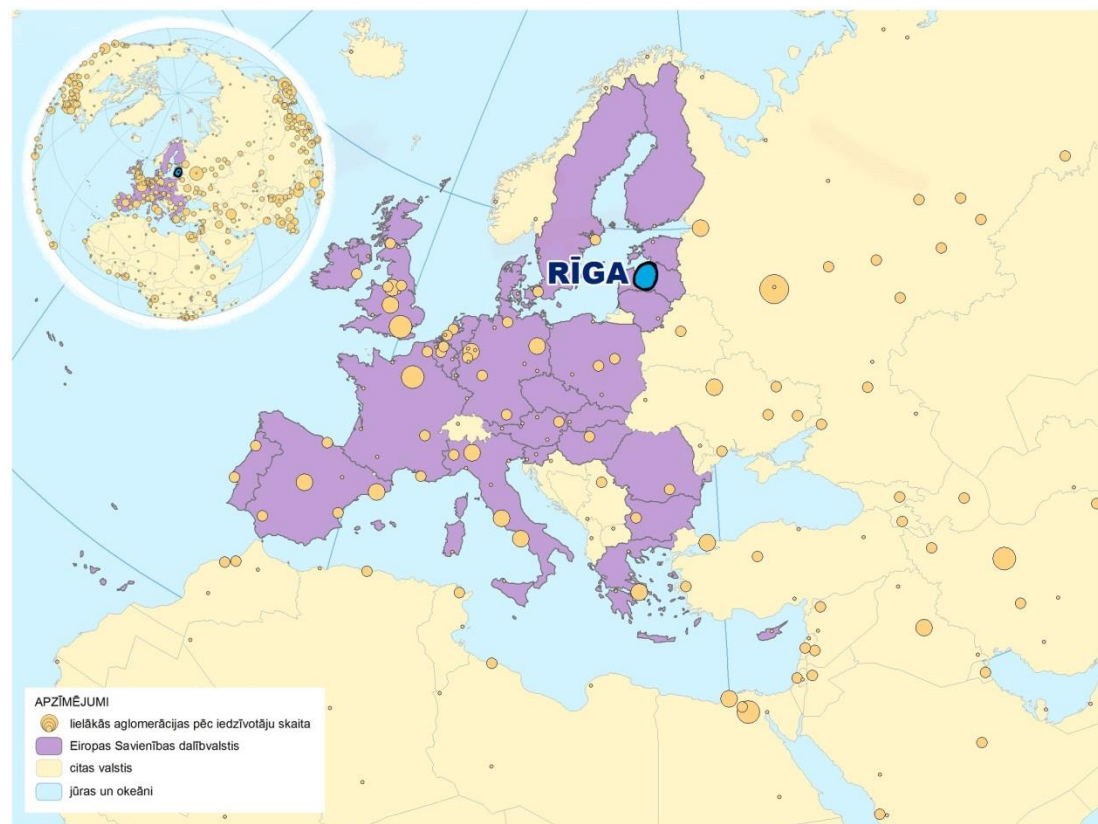
Co-funded by the  
European Union





# Facts about Riga

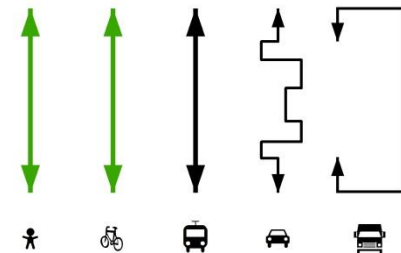
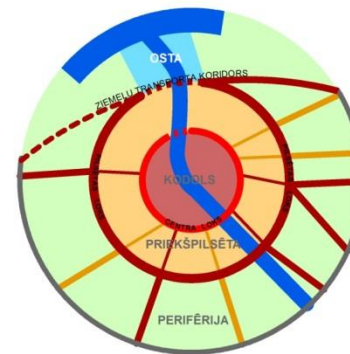
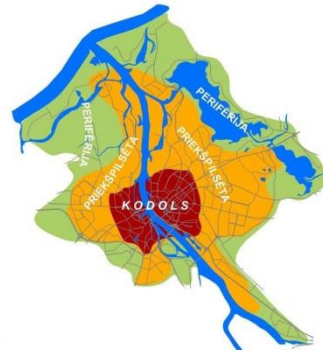
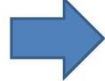
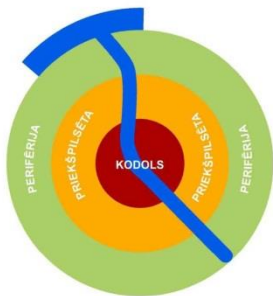
- Capital of the Republic of Latvia, founded in 1201, European Capital of Culture 2014
- The capital of Latvia is a lively Northern hub with railway, seaport, aviation and road networks
- Riga is located near the Baltic Sea, on the banks of the river Daugava
- **657 424** inhabitants in Riga and **>1 150 000** in Riga Region
- The density of the population in Riga – **2321** inhabitants per km<sup>2</sup>
- The area of Riga – **307,17** km<sup>2</sup>
- First capital to sign Covenant of Mayors

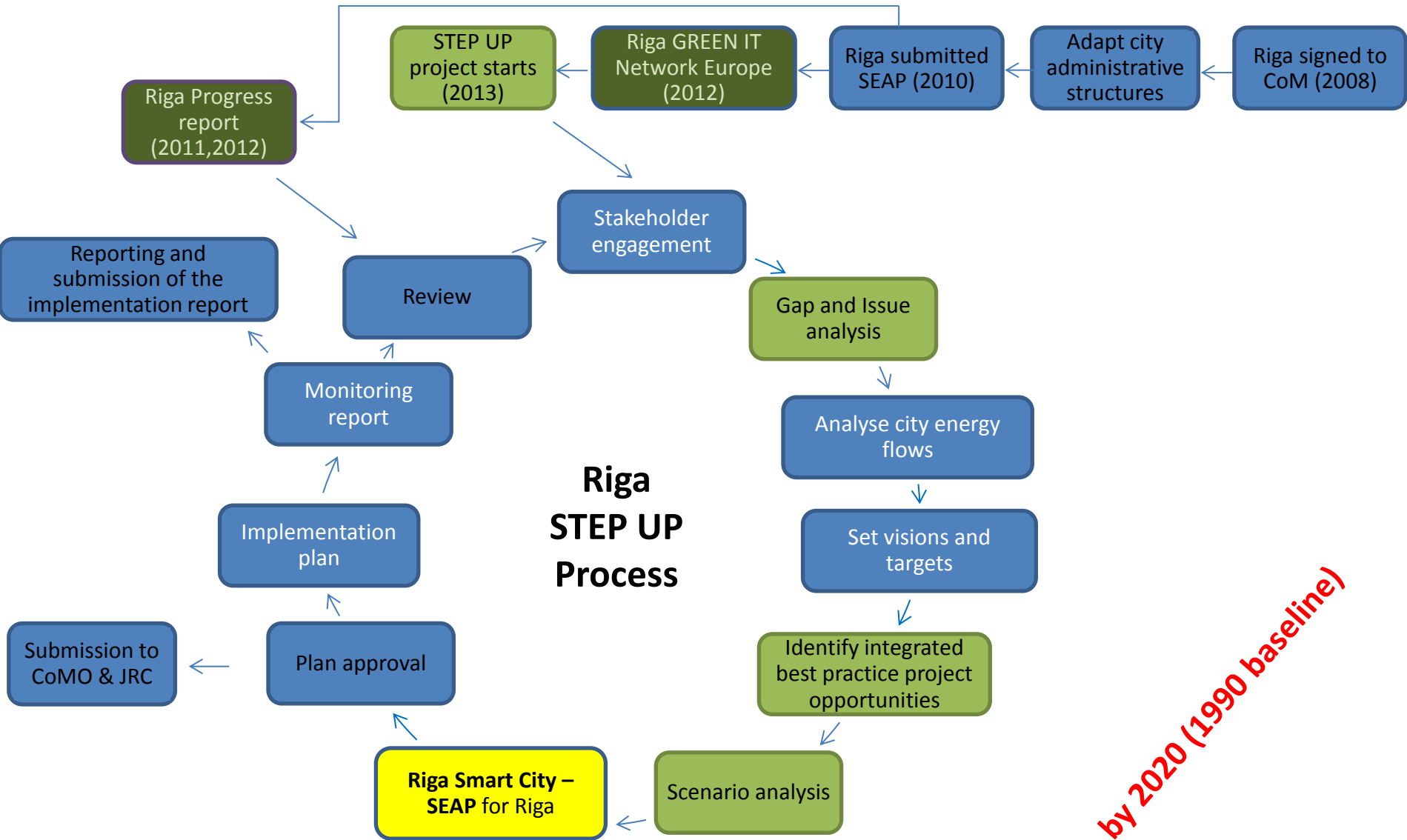




# Vision for 2030

- Compact, resource efficient;
- Multicultural and tolerant;
- Friendly for walkers, bikers and public transport;
- Effective and client oriented management;
- Good cooperation with agglomeration;
- Varied, affordable and quality housing;
- Excellent culture environment and creative inhabitants;
- Vital neighbourhoods and protected cultural landscape;
- Green corridors and accessible waterfronts;
- Wise industrial policy;
- Successful, environment friendly port.





**-55-60% CO<sub>2</sub> by 2020 (1990 baseline)**

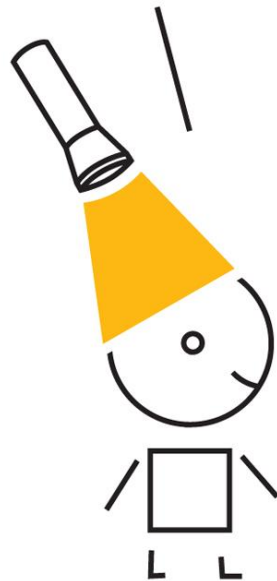


**URBAN DEVELOPMENT OF THE LEFT BANK**

RĪGAS PILSĒTAS ARHITEKTA BIROJS, RĪGAS PILSĒTAS ATTĪSTĪBAS DEPARTAMENTS, ARHIS, SZK

2009

Tagad  
es esmu  
rīdzinieks.



Es arī!

